



Albemarle County Parks & Recreation Updates:

Crozet Community Advisory Committee

September 14, 2022

Tim Padalino, AICP

Chief of Parks Planning

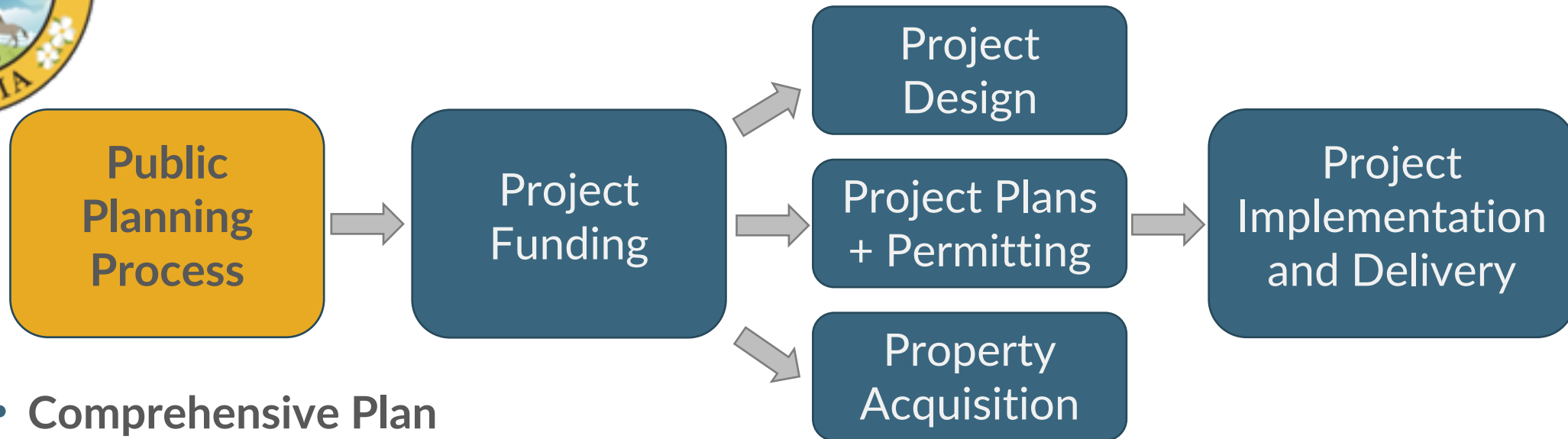


Overview of ACPR Agenda Item

- Park Planning > Funding > Development
- Countywide Priorities and Project Updates
 - Development + Implementation Phase
 - Planning Phase
- Project Updates in the Crozet CAC Area
 - Western Park Phase 1A
 - Crozet Trails
 - Crozet Plaza
- Q&A / Discussion



County Parks & Greenways Development



- **Comprehensive Plan**

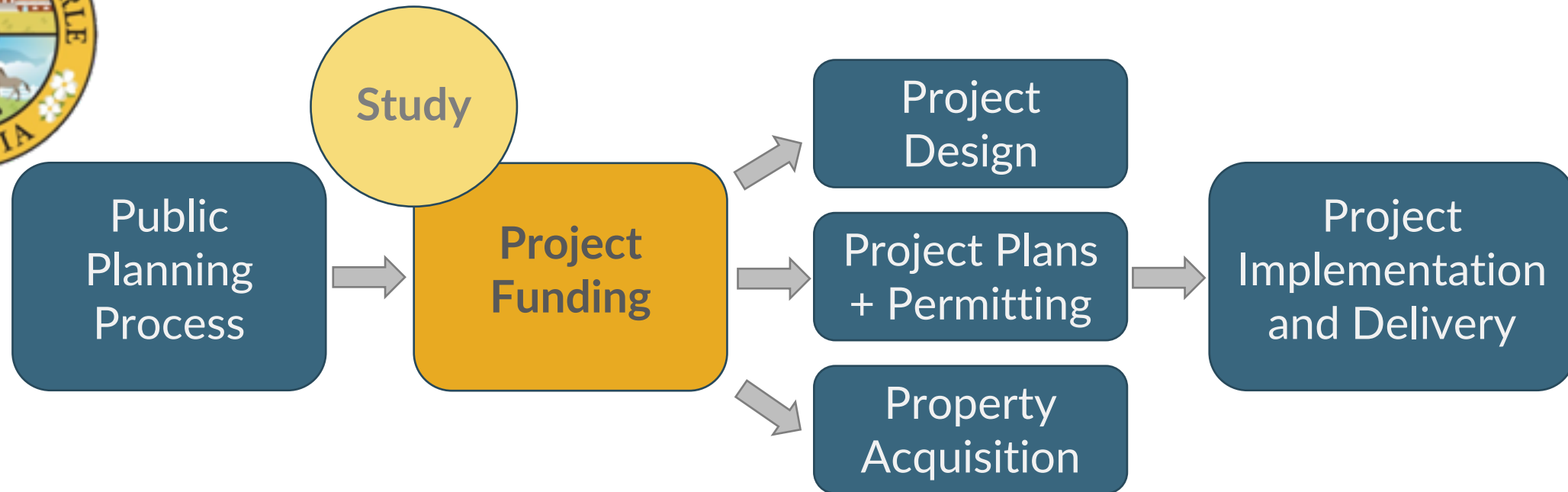
- *Greenway Plan for the Development Areas*
- *Rural Parks and Greenways Plan*
- “Parks, Recreation, Greenways, Blueways, and Green Systems” – Objectives and Strategies (Comp Plan 11.1 – 11.26)
- “Parks, Recreation, Greenways, Blueways, and Green Systems” – Implementation Priorities (Comp Plan 13.25 – 13.26)
- Greenway Plan Details (Comp Plan Appendix A.11.25 – A.11.31)

- **Development Area Master Plans**

- Parks & Green Systems Plan



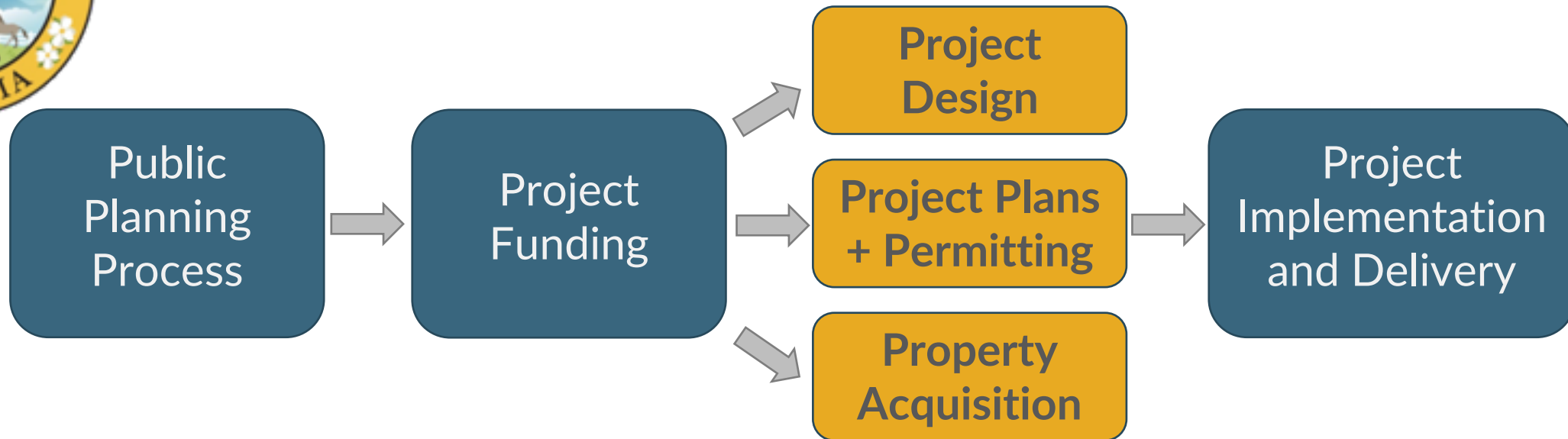
County Parks & Greenways Development



- Feasibility Study + Cost Estimates
- Albemarle County Capital Improvement Program (CIP) Funding Requests
- Grant Program Funding Proposals/Applications



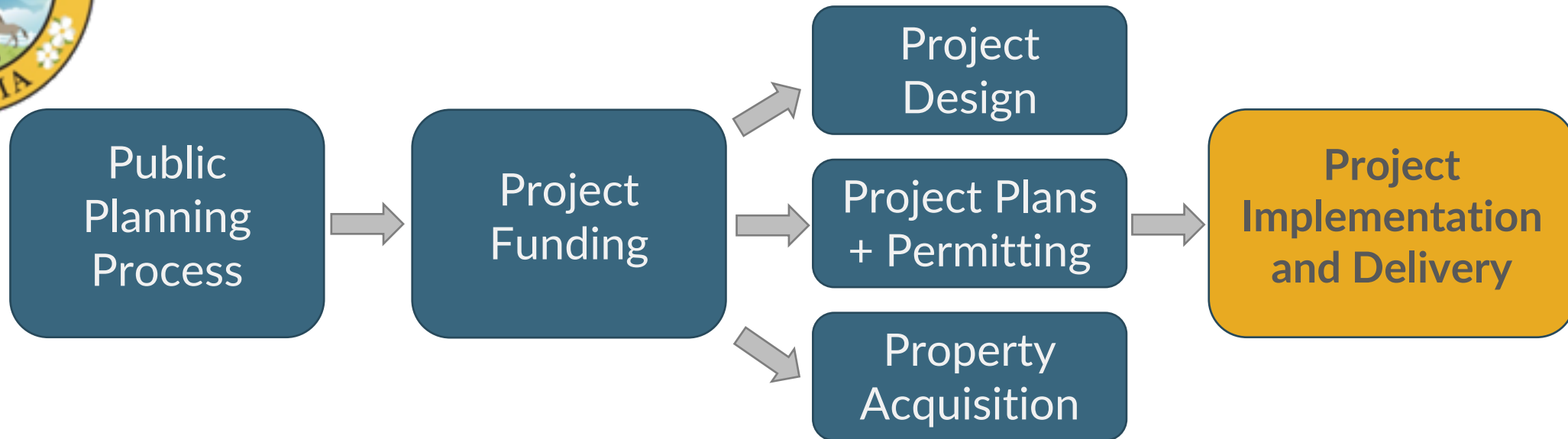
County Parks & Greenways Development



- Consultant A/E Services: Landscape Architecture, Civil Engineering, etc.
- Site Plan; Water Protection Ordinance Plan; Building Permit(s); etc.
- Easement Acquisition or Property Acquisition (as necessary)



County Parks & Greenways Development



- Construction Documentation (100%)
- Project Management: Facilities & Environmental Services Department – Facilities Planning & Construction Division
- RFP / Bid Process to select contractor(s)
- Construction



Countywide Updates: Development Phase

- Ivy Creek Natural Area (ADA paved paths)
- Simpson Park (fitness perimeter trail)
- Darden Towe Park (dog park expansion + native trees)
- Biscuit Run Park (Phase 1 trails – not open for public use)



*Ivy Creek
Natural Area*



Simpson Park



Biscuit Run Park

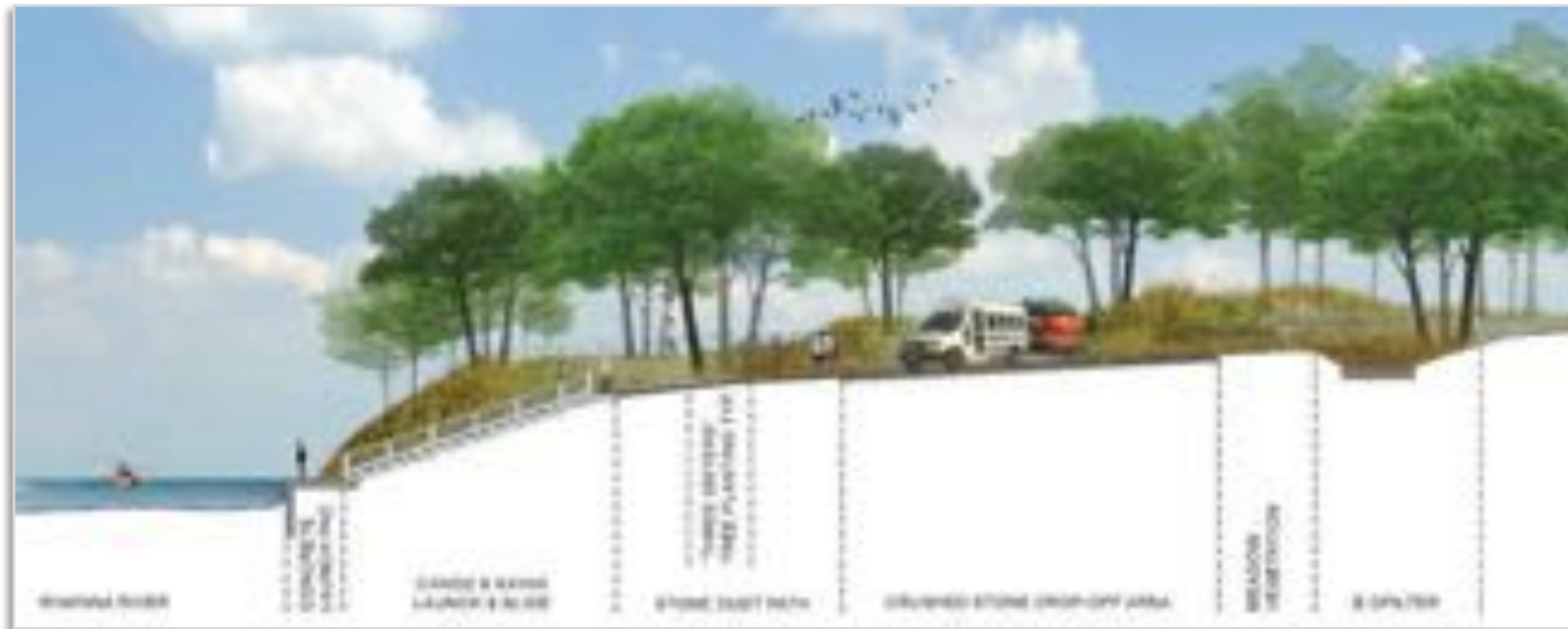


Countywide Updates: Planning Phase (1 of 3)

- **Biscuit Run Park**
 - Phase 1A: Route 20 Entrance and Trailhead
 - Phase 1B: Maintenance Facility; Trails, Bridges, and Boardwalks; and Connector Greenway to 5th Street Station “Trails Hub”
- **Brook Hill River Park (Phase 1)**



Proposed BR Connector Greenway



*Brook Hill
River Park
Proposed
Boat Launch
(Anhold Assoc.)*



Countywide Updates: Planning Phase (2 of 3)

- **Rivanna Greenway + Blueway Projects**

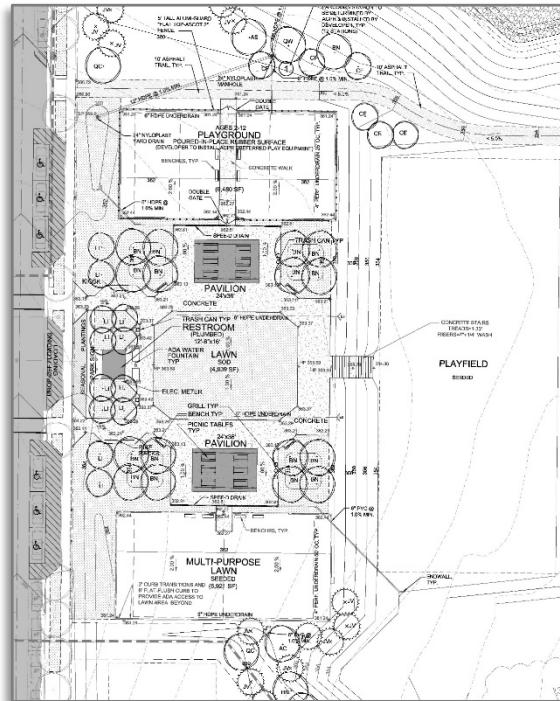
- Old Mills Trail – Shadwell extension from Pantops to Milton
- Free Bridge Lane; Milton Landing; Buck Island Creek Park





Countywide Updates: Planning Phase (3 of 3)

- Ivy Creek Natural Area: Historic Preservation / River View Farm
- 5th Street Station “Trails Hub” Smart Scale Project (by VDOT)
- Rivanna Village Park (by developer)
- Three Notched Trail “RAISE” Planning Grant (note: CDD lead)



*Rivanna Village Park Plan
(Robinson Development Group)*



*5th Street Station “Trails Hub” Conceptual Design
(VDOT Smart Scale application)*

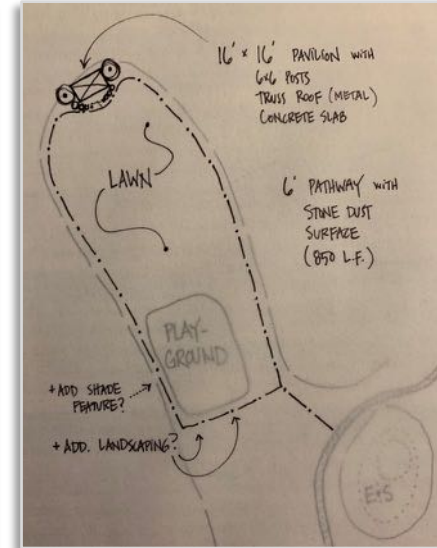


Crozet Project Updates (Development Phase)

- **Western Park – Phase 1A**
 - December 2021: Playground installed + soft opening
 - Next: Construction of pavilion and stone dust pathway



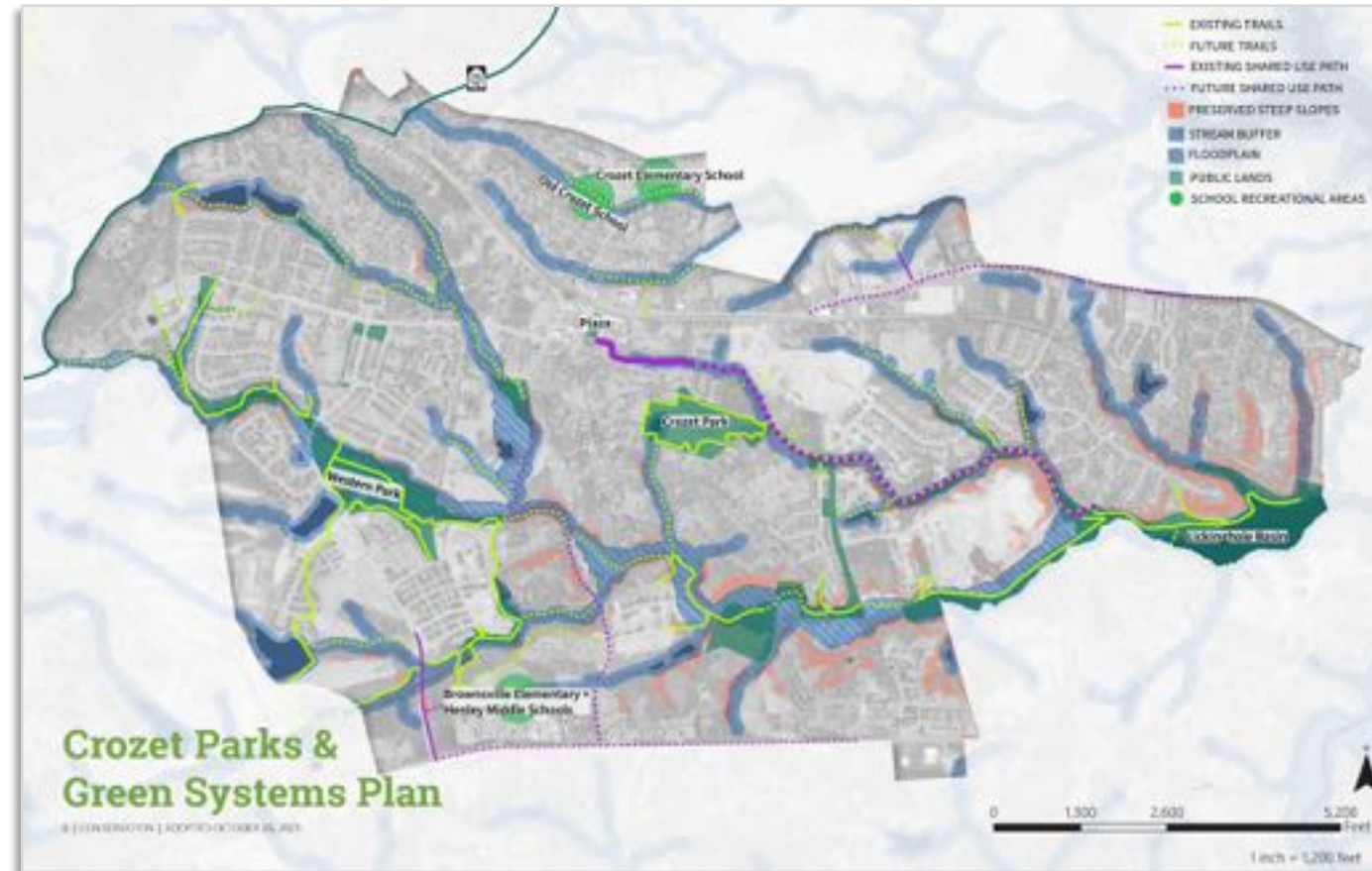
Western Park





Crozet Project Updates (Planning Phase)

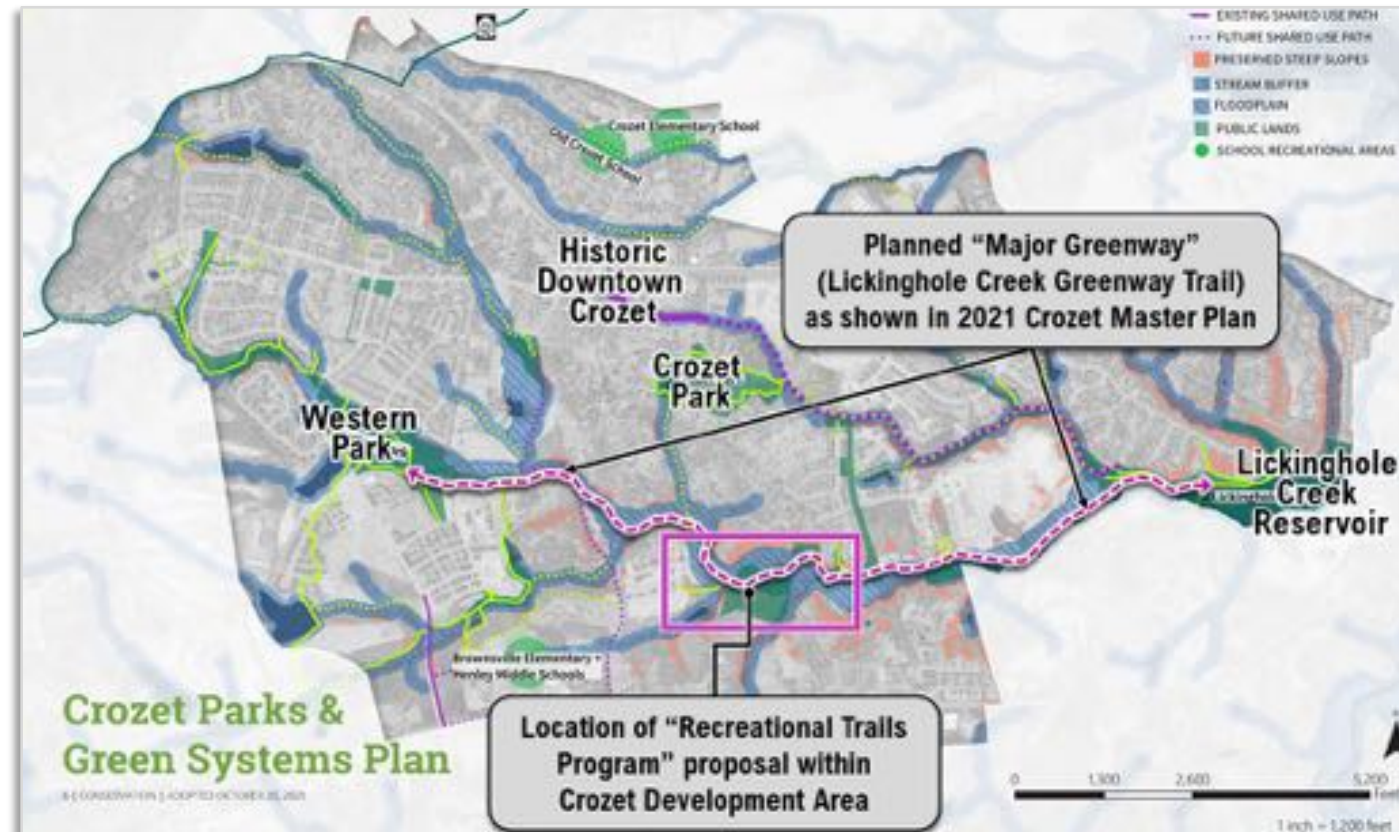
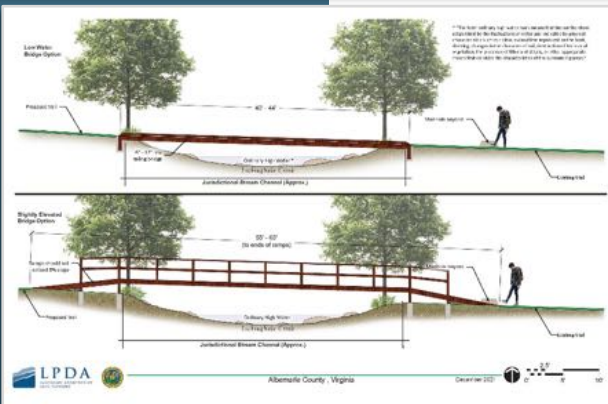
- **Crozet Trails – Crozet Connector Greenway**
 - Glenbrook greenway easement dedication in progress
 - Initiated coordination with Parkside Village HOA



Crozet Project Updates (Planning Phase)



- **Crozet Trails – Lickinghole Creek Greenway**
 - Commissioned a bridge feasibility study by LPDA @ Corey Farm
 - Submitted a grant application to VA DCR Rec Trails Program
 - Coordinated with Corey Farm HOA on easement amendment
 - Coordinated RWSA re: recreation at Lickinghole Creek Reservoir



Lickinghole Creek Greenway
Bridge Feasibility Study (LPDA)



Crozet Project Updates (Planning Phase)



Crozet Plaza Schematic Design
(Crozet New Town Associates)



“Our vision is to create unparalleled outdoor and recreation experiences right here at home.”

“Our mission is dedicated to providing a unique system of parks, trails, and recreational experiences, while being superior stewards of the environment.”



Q&A / Discussion

- Questions? Concerns? Comments? Other feedback?

- Contact Information:

Tim Padalino, AICP

Chief of Parks Planning

tpadalino@albemarle.org